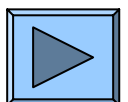
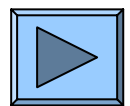
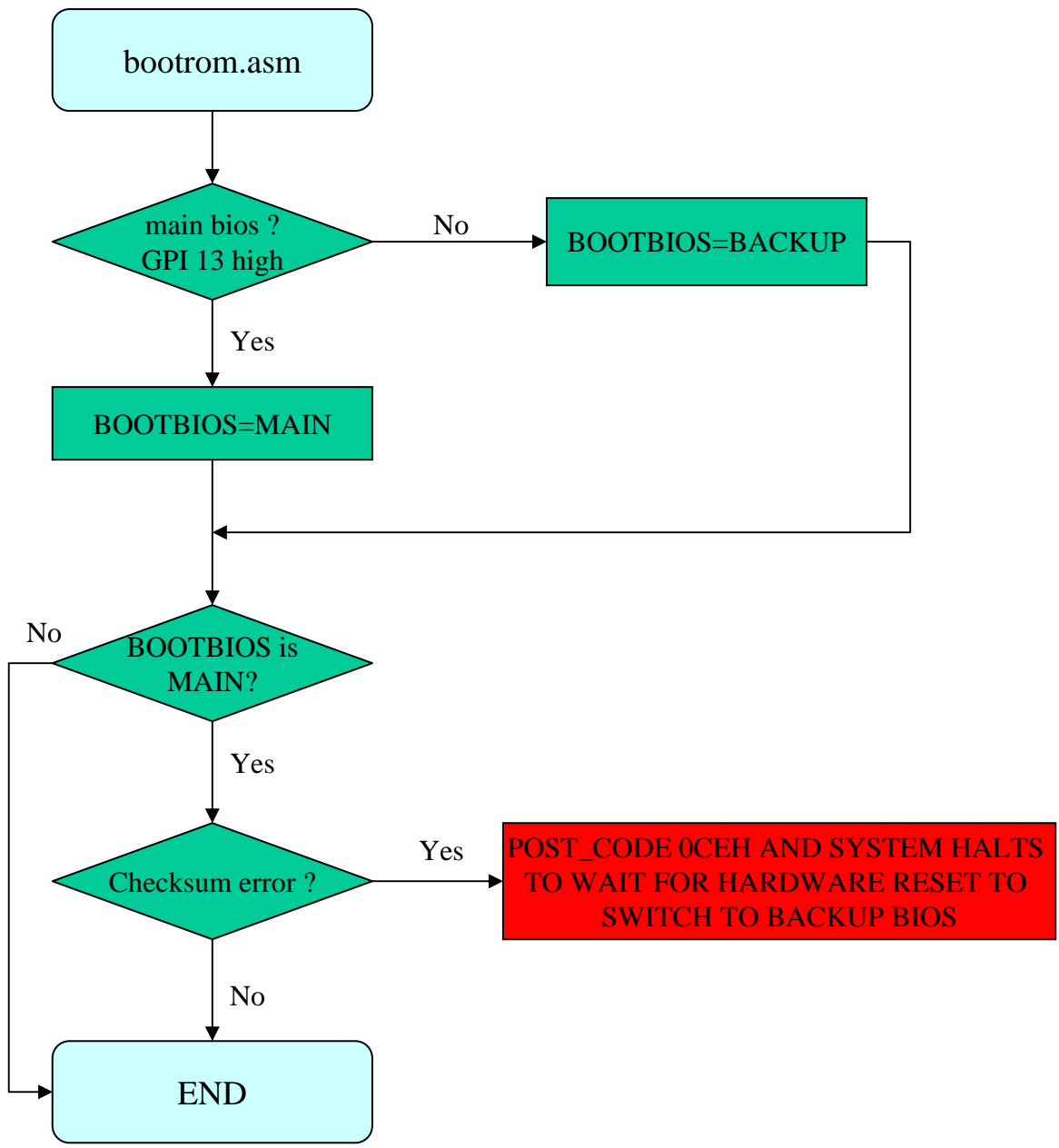


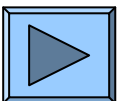
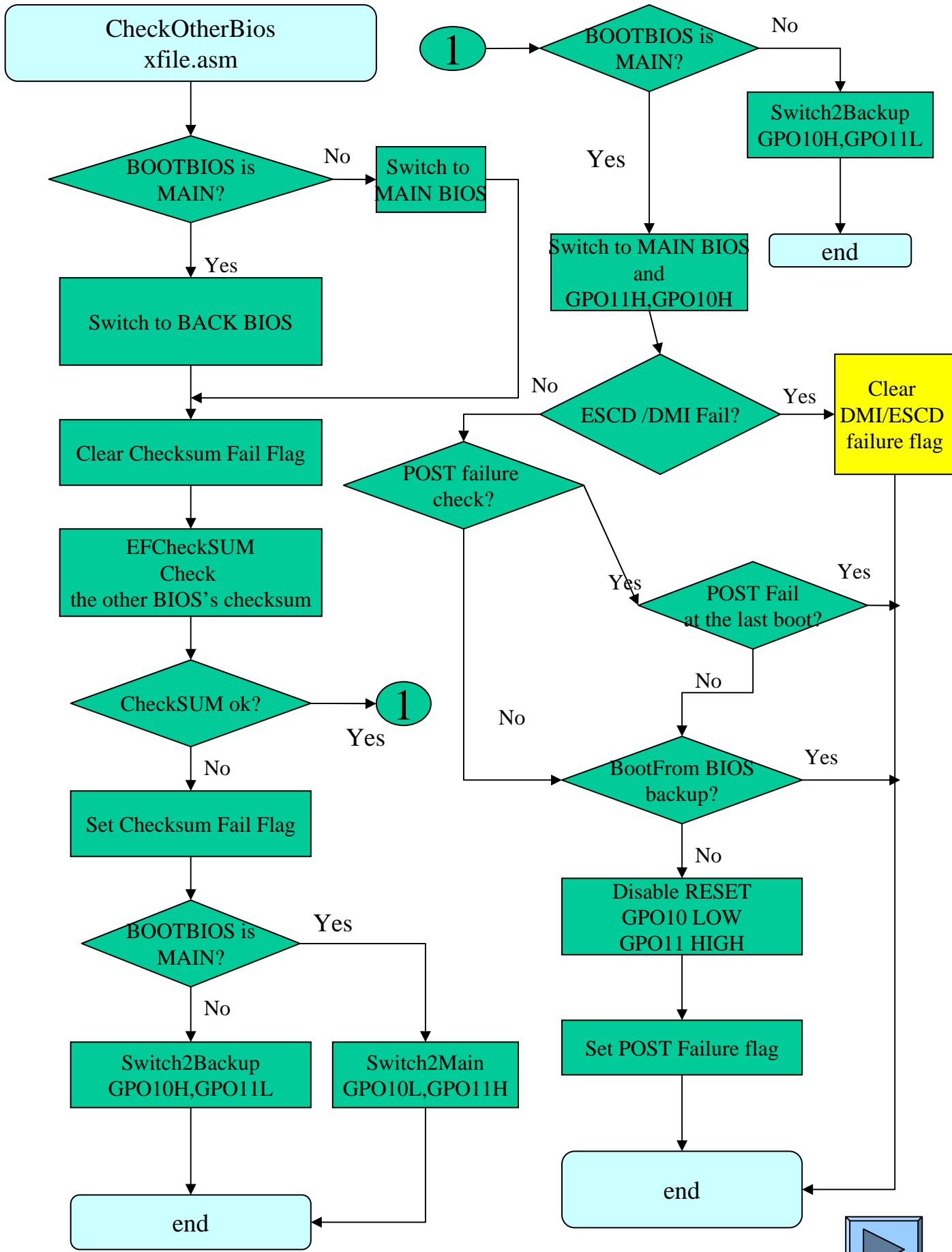
DuaBios

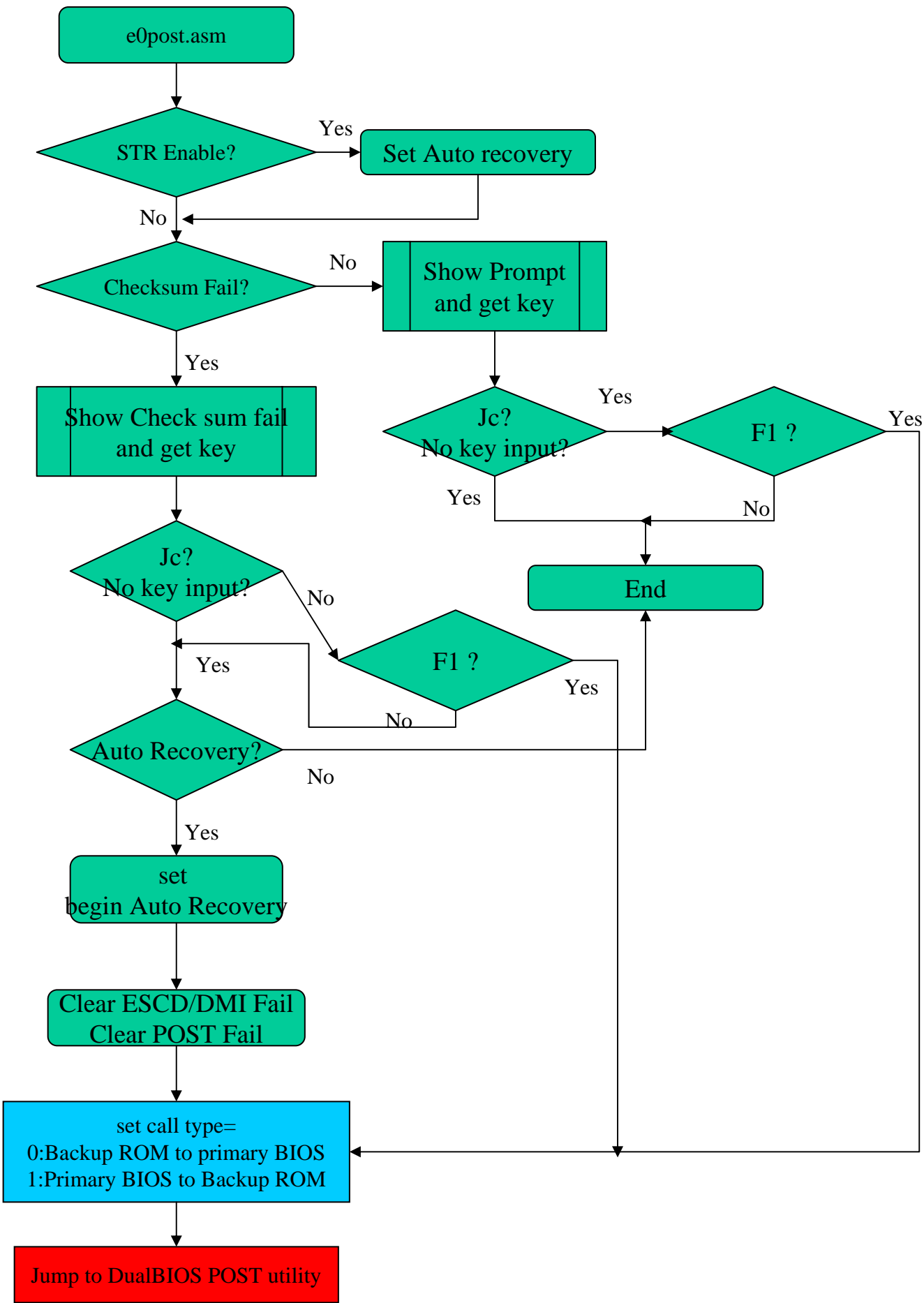
DualBIOS Related Files

- DualBIOS Flow
Control: *bootrom.asm, atorgs.asm*
- invoke DualBIOS POST Utility and
Checksum backup ROM: *e0psot.asm*
- clear post failure flag: *atbase.asm*
- set/clear DMI ESCD failure flag:
pnppost.asm
- clear POST failure flag before entering
BIOS setup menu: *postint9.asm*
- post messages and set/clear flags
functions: *xfile.asm*
- POST Flash Utility: *cbrom /oem0
flash.bin*
- Misc: *postmsg.asm*









e0post.asm

STR Enable?

Set Auto recovery

Checksum Fail?

Show Prompt and get key

Jc? No key input?

F1 ?

Jc? No key input?

F1 ?

End

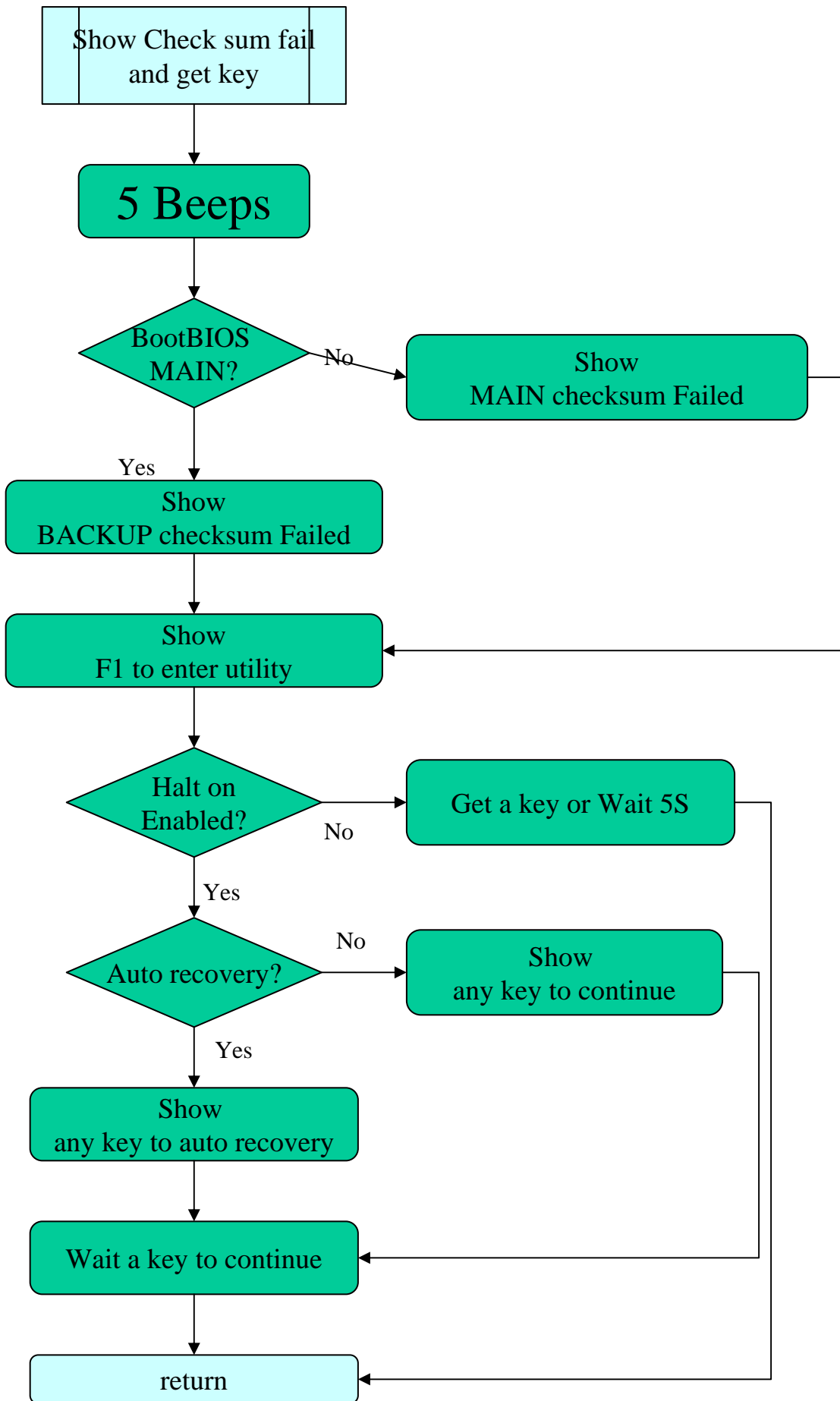
Auto Recovery?

set begin Auto Recovery

Clear ESCD/DMI Fail
Clear POST Fail

set call type=
0:Backup ROM to primary BIOS
1:Primary BIOS to Backup ROM

Jump to DualBIOS POST utility



Show Check sum fail
and get key

5 Beeps

BootBIOS
MAIN?

No

Show
MAIN checksum Failed

Yes

Show
BACKUP checksum Failed

Show
F1 to enter utility

Halt on
Enabled?

No

Get a key or Wait 5S

Yes

Auto recovery?

No

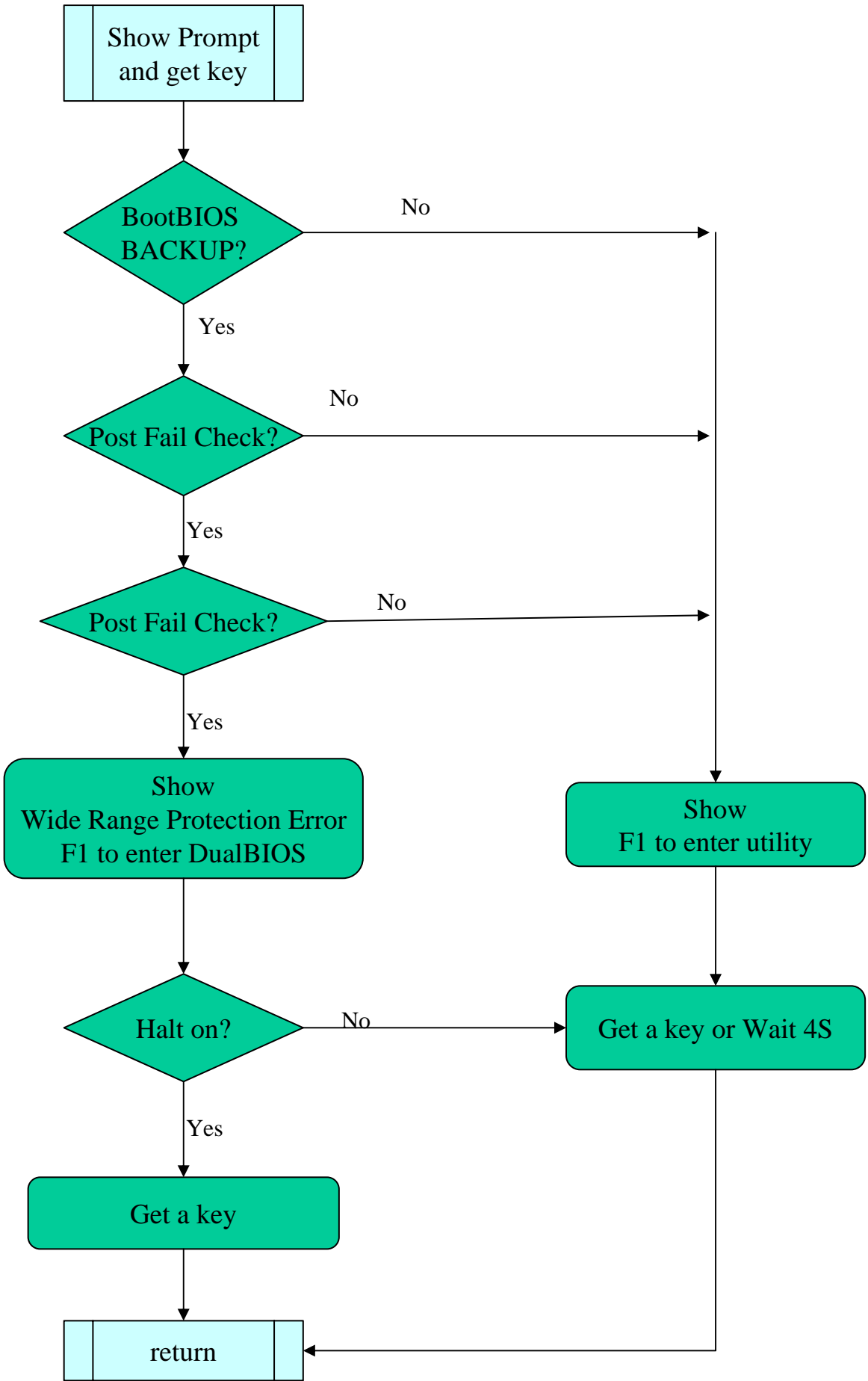
Show
any key to continue

Yes

Show
any key to auto recovery

Wait a key to continue

return



Show Prompt and get key

BootBIOS BACKUP?

No

Yes

Post Fail Check?

No

Yes

Post Fail Check?

No

Yes

Show Wide Range Protection Error F1 to enter DualBIOS

Halt on?

No

Yes

Get a key

Get a key or Wait 4S

Show F1 to enter utility

return

